



Chronic diseases in HIV

Francois Venter

Wits Reproductive Health & HIV Institute

fventer@wrhi.ac.za

Which are the common chronic diseases in South Africa?



Chronic illness...

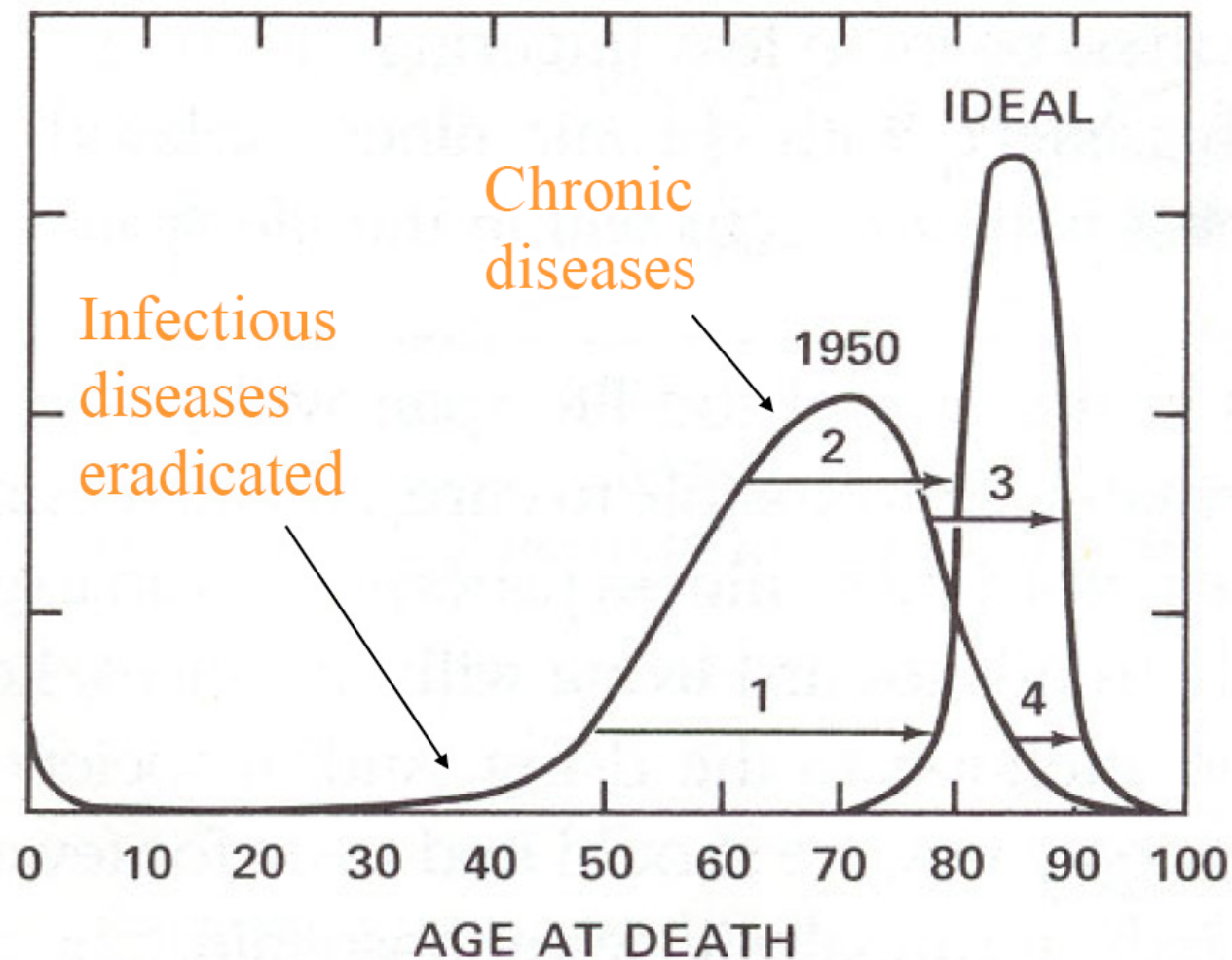
- SA mortality data
- AIDS kills 50% (TB, pneumonia, gastro - #1-3)
- #4: Hypertension
- #6: Diabetes



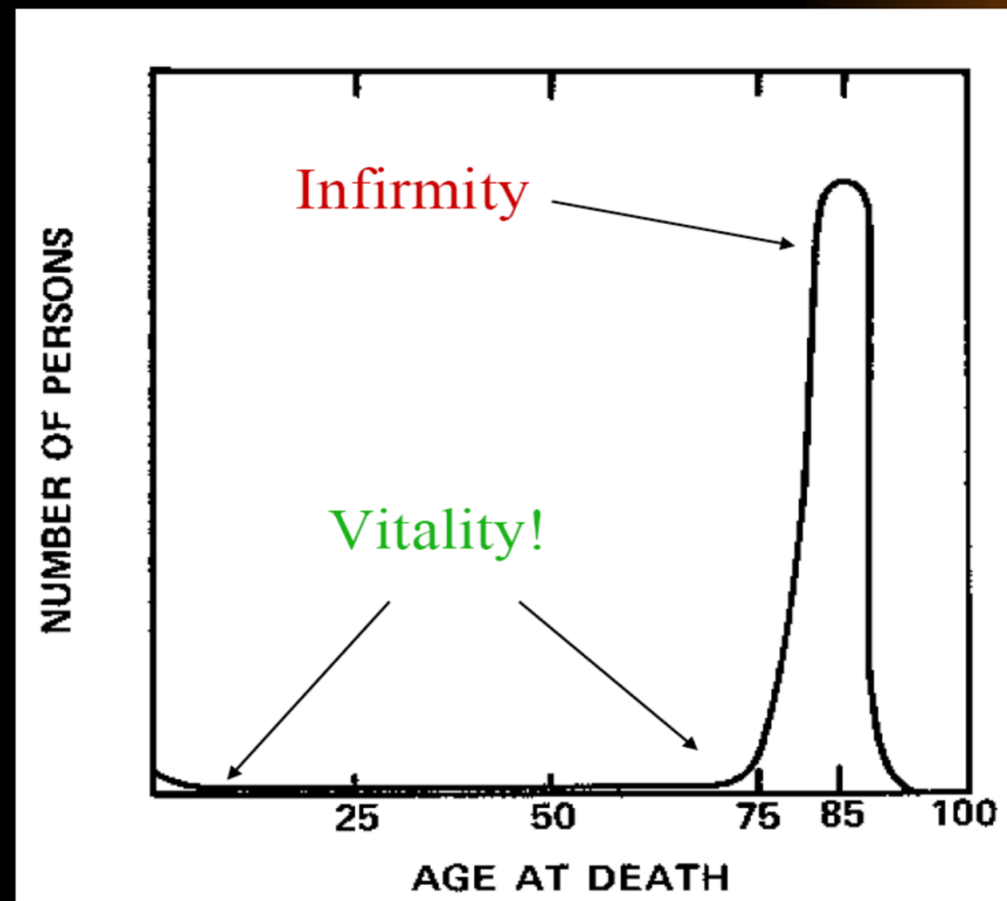
Why would life expectancy be higher
in HIV?



Changing Life-Expectancy



The Perfect Life: Vitality & Brief Infirmary



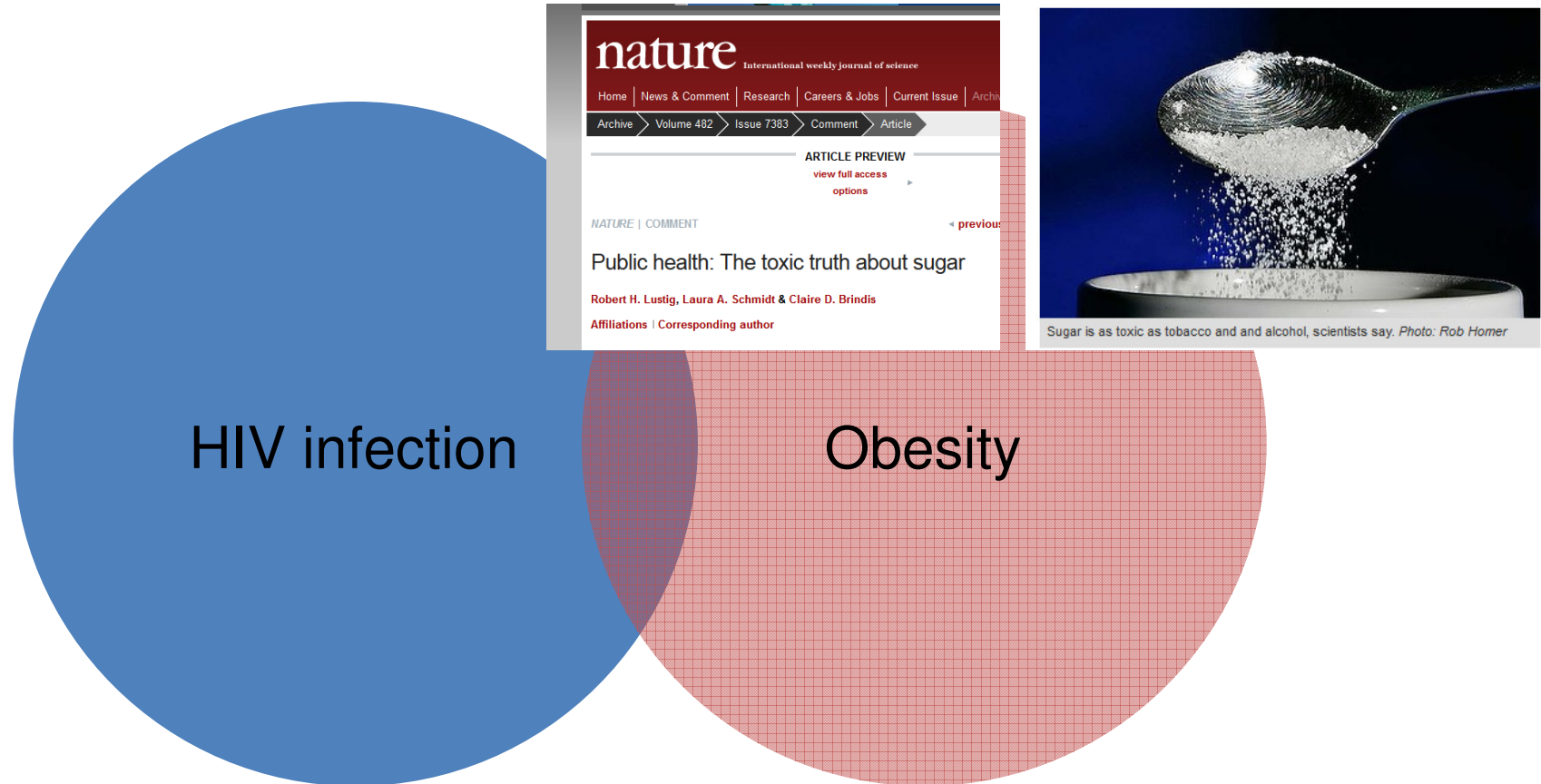
Why are South Africans so fat?

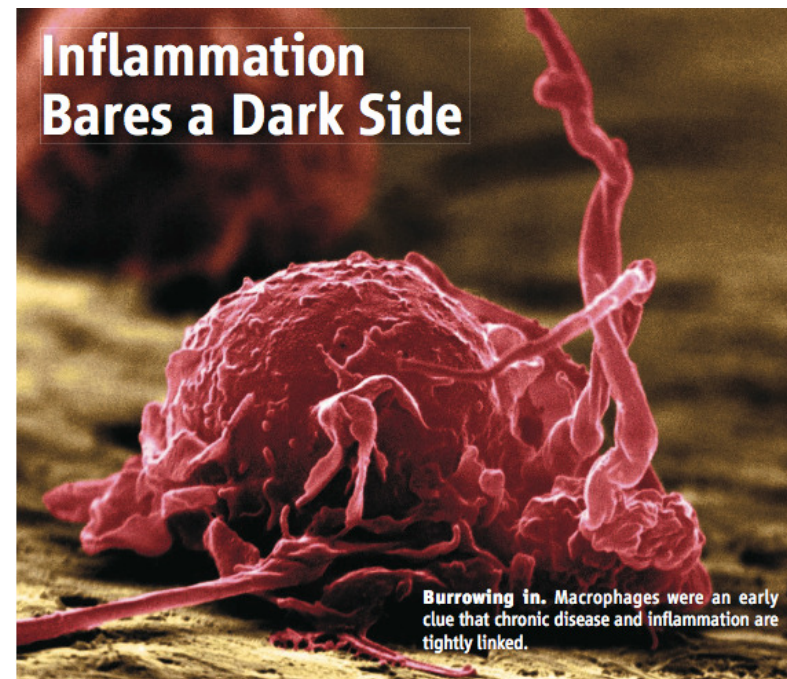
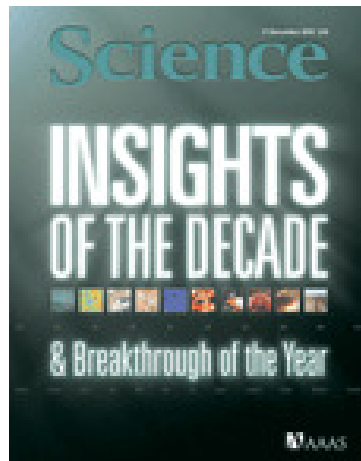


BMJ 1990

- “Type 2 DM will be the commonest cause of death in South Africa”
- Lancet 2013: same?

2 Overlapping Epidemics





Traditional risk factors (age, gender, DM, HTN) are major predictors for MI (D:A:D)

	Adjusted Model 1		Adjusted Model 2	
	Relative Rate (95% CI)	P Value	Relative Rate (95% CI)	P Value
Exposure to PIs (per year)	1.16 (1.10-1.23)	<0.001	1.10 (1.04-1.18)	0.002
Age (per 5 yr)	1.39 (1.31-1.46)	<0.001	1.32 (1.23-1.41)	<0.001
Male sex	1.91 (1.28-2.86)	0.002	2.13 (1.29-3.52)	0.003
BMI >30 kg/m ²	1.70 (1.08-2.69)	0.02	1.34 (0.77-2.34)	0.31
Family history of CHD	1.56 (1.10-2.23)	0.01	1.40 (0.96-2.05)	0.08
Smoking status				
Current	2.83 (2.04-3.93)	<0.001	2.92 (2.04-4.18)	<0.001
Former	1.65 (1.12-2.42)	0.01	1.63 (1.07-2.48)	0.02
Previous cardiovascular event	4.30 (3.06-6.03)	<0.001	4.64 (3.22-6.69)	<0.001
Diabetes mellitus	-	-	1.86 (1.31-2.65)	<0.001
Hypertension	-	-	1.30 (0.99-1.72)	0.06
Total cholesterol (per mmol/liter increase)	-	-	1.26 (1.19-1.35)	<0.001
HDL cholesterol (per mmol/liter increase)	-	-	0.72 (0.52-0.99)	0.05

Fatter may be better...

Clinical Infectious Diseases Advance Access published September 26, 2011

MAJOR ARTICLE **HIV/AIDS**

An Optimal Body Mass Index Range Associated With Improved Immune Reconstitution Among HIV-Infected Adults Initiating Antiretroviral Therapy

John R. Koethe,¹ Cathy A. Jenkins,² Bryan E. Shepherd,² Samuel E. Stinnette,¹ and Timothy R. Sterling^{1,3}

¹Department of Medicine, Division of Infectious Diseases and Departments of, ²Biostatistics and ³Medicine, Center for Health Services Research,

Conclusions. 12-month immune reconstitution on ART was highest among patients commonly classified as overweight, suggesting there may be an optimal BMI range for immune recovery on ART.

The 11 Keys to Healthy Aging in HIV

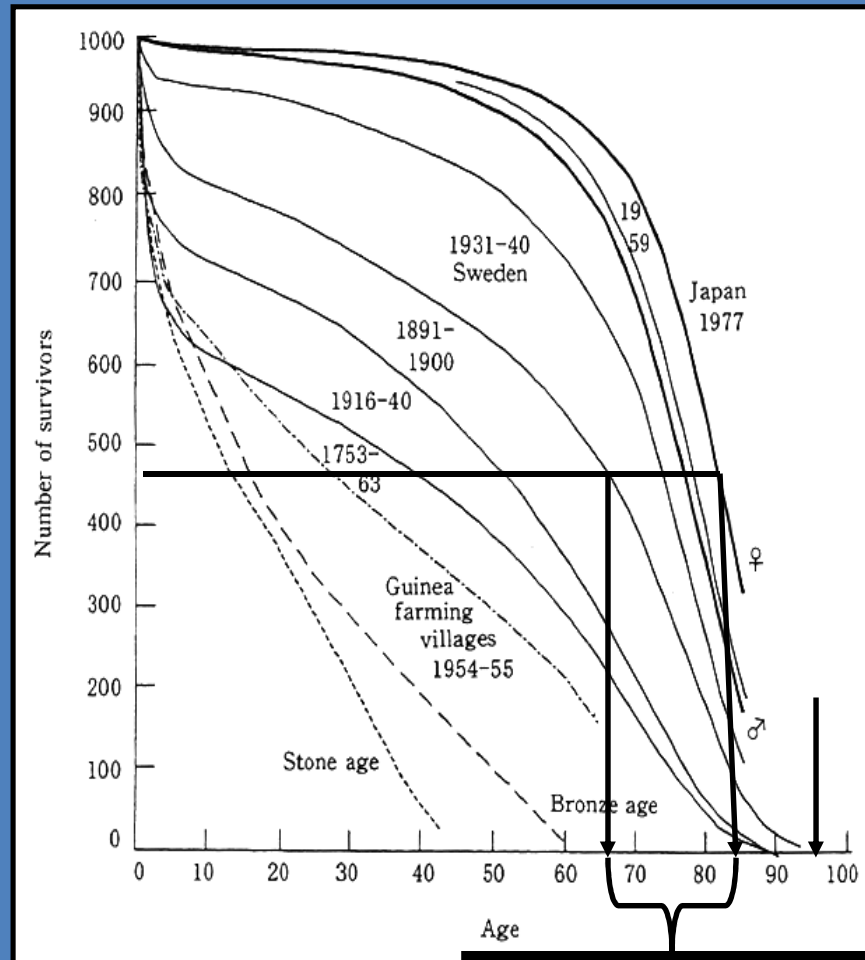
1. Viral suppression after early diagnosis
- 2.
- 3.
- 4.
- 5.
- 6.
- 7.
- 8.
- 9.
- 10.
- 11.



What can you tell your patients
BEFORE starting ART?



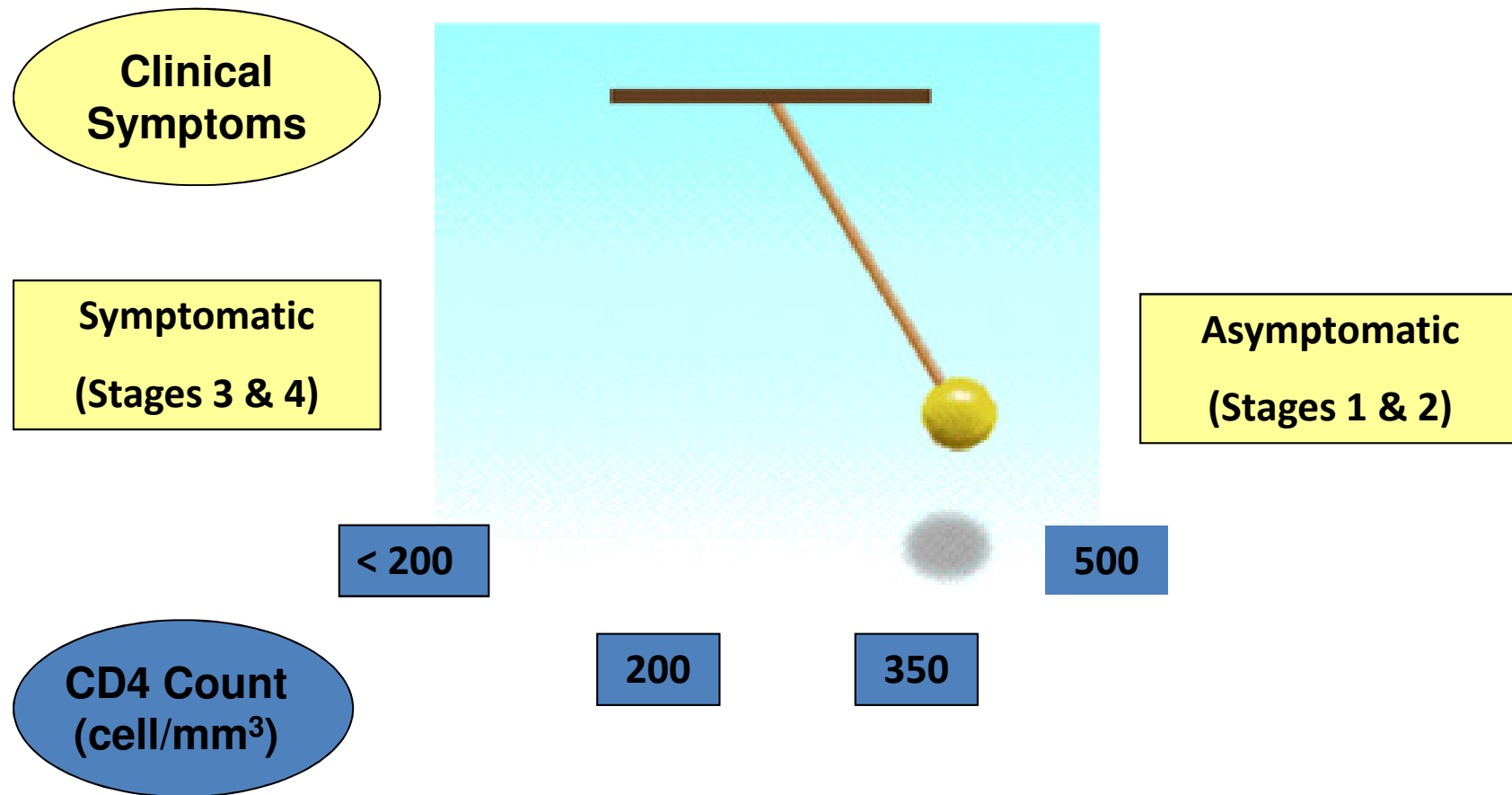
Population survival curves



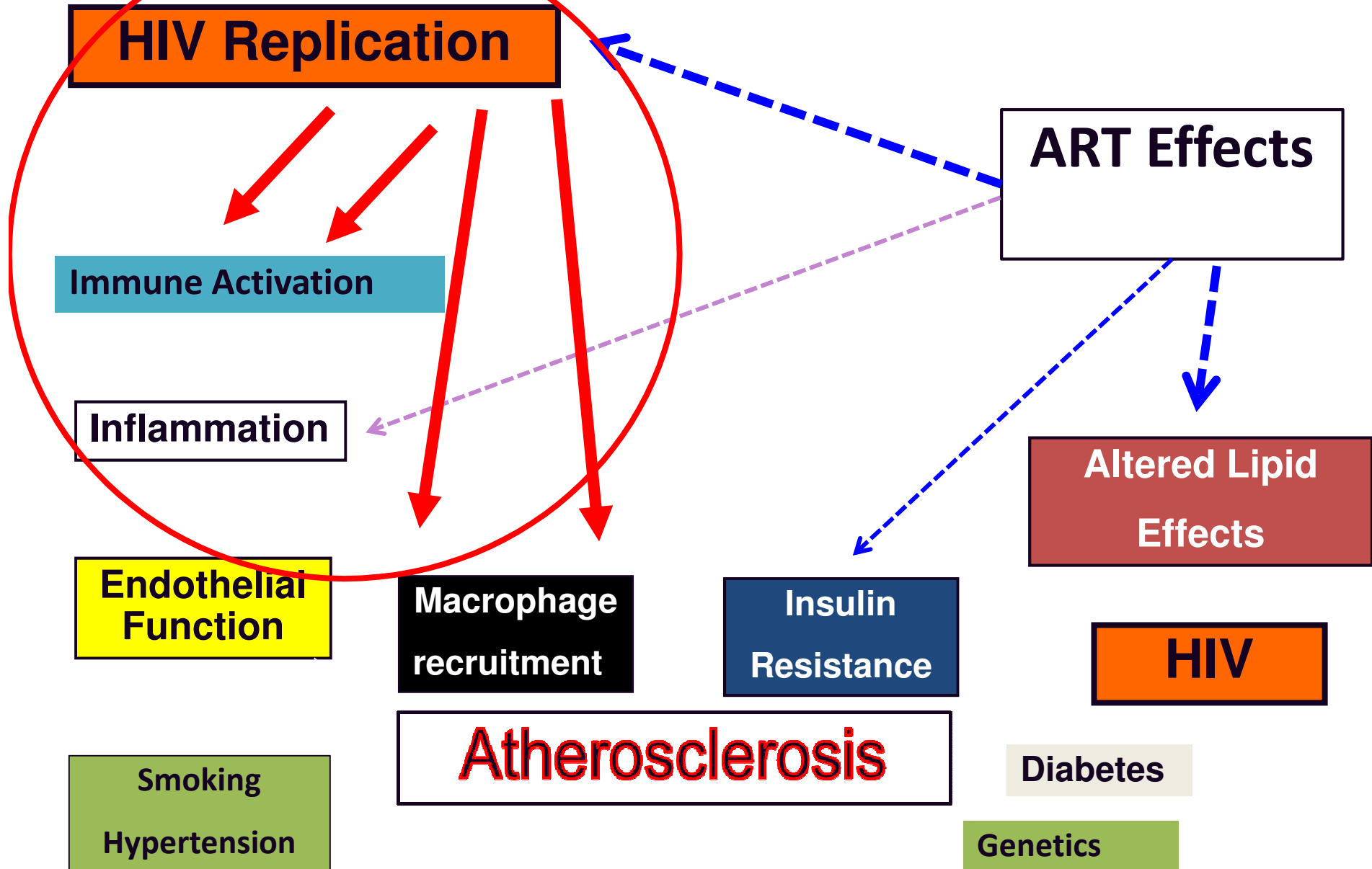
- Increase in average life expectancy but not life span
- Disease vs. aging effects

Life span

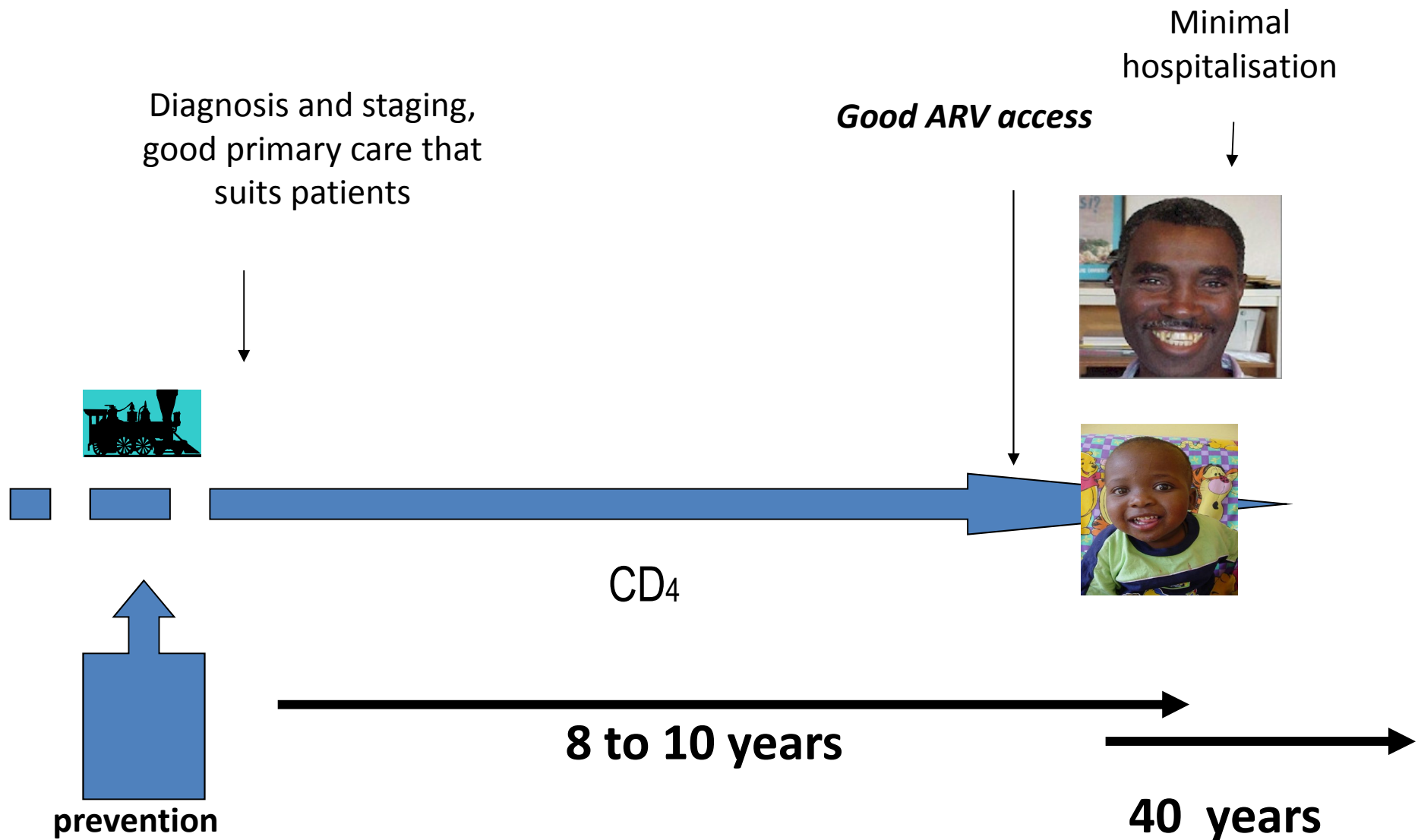
Therapy for Early HIV Infection



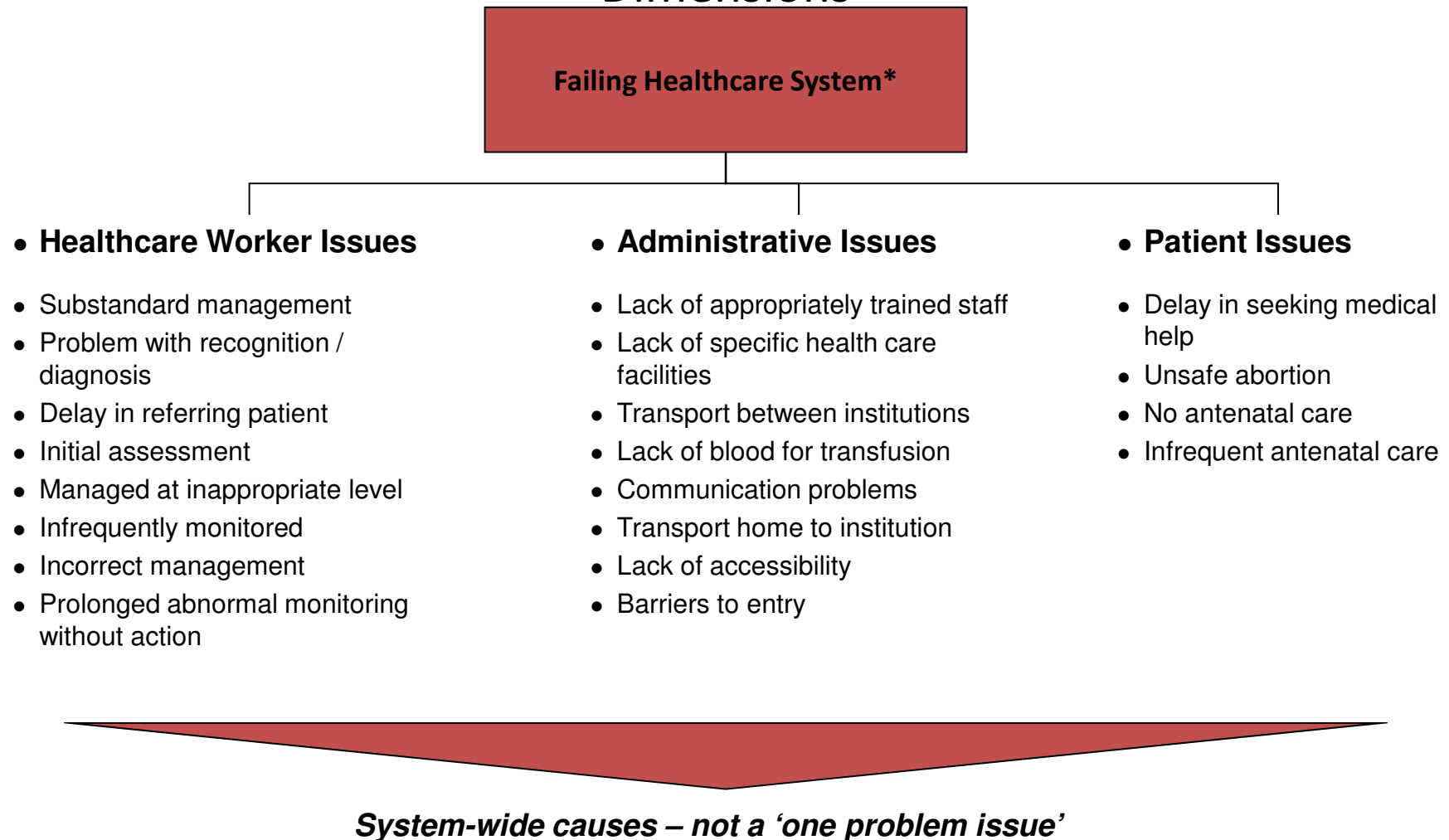
Effects of HIV, Host and ART (Currier, WHEAX0102)



Vision... chronic care



The Health System Appears to Be Weak Across a Multitude of Dimensions



Note: *Modifiable Factors contributing to Maternal death used as a barometer of state of healthcare system, Approximately 3000 Maternal Deaths were assessed and 9000 errors were noted
Source: Saving Mothers, Medical Research Council

Treatment as prevention

- Can reducing the viral load earlier have a public health impact?
- Convenient convergence!



The 10 Keys to Healthy Aging

1. Control blood pressure
2. Regulate blood glucose
3. Lipids
4. Stop smoking
5. Be active
6. Participate in cancer screenings
7. Get regular immunizations
8. Prevent bone loss and muscle weakness
9. Combat depression
10. Maintain social contact

